



LABOR SITUATION

Office of Research

Danté Bartolomeo, Commissioner

FOR IMMEDIATE RELEASE

April 2022 Data

CT Unemployment Rate = 4.4%

US Unemployment Rate = 3.6%

CT's unemployment rate down two-tenths to 4.4%; nonfarm jobs up 1,600 in April 2022

WETHERSFIELD, May 19, 2022 – Connecticut's unemployment rate declined two-tenths of a percentage point to 4.4% and the level of nonfarm industry employment increased by 1,600 (0.1%) to 1,647,100 jobs in April 2022 (preliminary). Both are calculated on a seasonally adjusted basis. The statewide payroll employment level is now 47,300 (3.0%) positions above the April 2021 benchmarked job estimate of 1,599,800. Connecticut has now recovered 82.1% (237,500) of the 289,400 nonfarm positions lost in the March and April 2020 COVID trough, now exactly two years ago. The previously reported March 2022 increase of 4,600 was revised lower by 900 positions to a still strong 3,700 monthly job gain. The drop in the April 2022 unemployment rate was due to a 2,200 dip in the number of unemployed. These labor statistics are derived from separate surveys of businesses and households by the U.S. Bureau of Labor Statistics (BLS) in cooperation with their state partners.

"April's job growth builds on the momentum we saw in February and March," said Patrick Flaherty, Director of the Office of Research at the Connecticut Department of Labor. "Manufacturing employment has increased for eight consecutive months while wholesale trade joins administrative & support services and construction as industries that have more than fully recovered the jobs lost during the COVID shutdown. Recent claims data suggest the unemployment rate will remain on its downward path."

Connecticut's private sector employment increased by 1,900 jobs (0.1%) in April 2022 to 1,422,800 and is higher by 44,900 positions (3.3%) from the April 2021 levels (1,377,900). The state's private sector is 85.1% recovered from the April 2020 COVID employment low point. The **government supersector**, was lower again last month by 300 jobs (-0.1%) in April 2022 to a level of 224,300. This is just 2,400 (1.1%) positions above April 2021 levels. State government has been lower five months in a row. The public sector is only 47.5% recovered from the COVID lockdown. The government *supersector* in Connecticut encompasses all federal, state, local, and tribal employment, including public education and Native American casino employment located on reservations.

Five of the ten major industry *supersectors* generated employment gains, while five declined.

Five Connecticut industry *supersectors* increased in April 2022:

| Increasing Sectors | | | |
|-----------------------|--------------------|----------------|-----------------------|
| Industry Sector | Amount of Increase | Percent Change | April 2022 Employment |
| Leisure & Hospitality | +3,000 | 2.1% | 147,500 |
| Manufacturing | +1,000 | 0.6% | 159,300 |
| Financial Activities | +600 | 0.5% | 118,500 |
| Other Services | +400 | 0.7% | 60,400 |
| Construction & Mining | +300 | 0.5% | 63,200 |

Five industry *supersectors* declined:

| Decreasing Sectors | | | |
|------------------------------------|--------------------|----------------|-----------------------|
| Industry Sector | Amount of Decrease | Percent Change | April 2022 Employment |
| Trade, Transportation, & Utilities | -1,200 | -0.4% | 295,100 |
| Information | -1,000 | -3.2% | 29,800 |
| Professional & Business Services | -800 | -0.4% | 215,000 |
| Education & Health Services | -400 | -0.1% | 334,000 |
| Government | -300 | -0.1% | 224,300 |

Connecticut Labor Market Areas (LMAs): Four of the six larger Connecticut **LMAs**, seasonally adjusted by the BLS, had April employment gains, while the **Bridgeport-Stamford-Norwalk LMA** (-0.5%, 392,600) declined by 2,100 positions and the **New Haven LMA** was slightly lower by 200 jobs (-0.1%, 294,300). The **Hartford LMA** (0.4%, 569,800) led all monthly gaining regions in number, adding 2,000 jobs. This was followed by the **Norwich-New London-Westerly LMA** (0.8%, 120,100), which was strongest in monthly percentage terms, adding 900 jobs. The **Danbury LMA** (0.4%, 75,200) was higher by 300 jobs and the **Waterbury LMA** (0.3%, 65,800) contributed 200.

Note: The six major Connecticut LMAs are estimated independently from the statewide data by the BLS and cover more than 90% of the nonfarm employment in the state. Thus, estimates will not exactly sum to the statewide total.

Hours and Earnings: The April 2022 **private sector** workweek, *not seasonally adjusted*, averaged 33.8 hours. This is down three-tenths from the April 2021 estimate (34.1). Average hourly earnings at \$34.34, *not seasonally adjusted*, were up by \$0.64 (1.9%) from the April 2021 estimate of \$33.70. The resultant April 2022 private sector weekly wage averaged \$1,160.69, higher by \$11.52 from a year ago (1.0%, \$1,149.17). The Consumer Price Index for All Urban Consumers (CPI-U, U.S. City Average, *not seasonally adjusted*) in April 2022 was up 8.3% from a year ago. *Current all-employee private sector hours and earnings estimates can be volatile due to fluctuating sample responses.*

Labor Force Data (residential household survey)

The April 2022 unemployment rate for Connecticut was estimated by the BLS Local Area Unemployment Statistics program (LAUS) to be **4.4%** (seasonally adjusted), lower by two-tenths of a percentage point from the revised March 2022 level of 4.6%. The Connecticut jobless rate was 7.0% in April 2021. The Connecticut unemployment was 3.4% in February 2020 just before the Covid lockdown. The U.S. unemployment rate for April 2022 was 3.6%, unchanged from the March 2022 rate of 3.6% and down from the April 2021 jobless rate of 6.0%. *Not seasonally adjusted*, the Connecticut unemployment rate was 3.8%, just 0.6% points higher than the 3.2% *not seasonally adjusted* April 2019 rate. *Not seasonally adjusted data can be compared to the same month of prior years. April 2019 was the most recent pre-COVID April.*

Unemployment claims for first-time filers (seasonally adjusted) in Connecticut were an average of 2,848 per week in April 2022, up by 573 (25.2%) from the March 2022 (2,275, a series low) level and lower by 2,518 claims (-46.9%) from the average weekly count of 5,366 in April 2021. This level of average weekly initial claims is still below the February 2020 levels (2,937) - just before the COVID lockdown.

The nonfarm employment estimate, derived from a survey of businesses, is a measure of jobs in the state; the unemployment rate and labor force estimates are based on a household survey, and measure the work status of people who live in Connecticut. Overall, as the national and state economies recover, volatility in monthly numbers can be expected. Job and employment estimates are best understood in the context of their movement over several months rather than observed changes in a single month's value.

Next Connecticut Labor Situation release: Thursday, June 16, 2022
(Preliminary May 2022 data)

Contact:
Communications, CT Department of Labor
CTDOL.SocialMedia@ct.gov

Labor Market Information is available at: www.ctworkforce.info
200 Folly Brook Boulevard, Wethersfield, CT 06109-1114 www.ct.gov/dol
An Equal Opportunity/Affirmative Action Employer

NONFARM EMPLOYMENT

Jobs - by Place of Work

CONNECTICUT AND THE UNITED STATES - Seasonally Adjusted

| | April 2022 P | March 2022 R | February 2022 | January 2022 | April 2021 | Over Month Change | Over Month Rate | Over Year Change | Over Year Rate |
|-------------------------------------|--------------------|--------------------|--------------------|--------------------|--------------------|----------------------|--------------------|---------------------|-------------------|
| CONNECTICUT | 1,647,100 | 1,645,500 | 1,641,800 | 1,636,400 | 1,599,800 | 1,600 | 0.1% | 47,300 | 3.0% |
| Total Private | 1,422,800 | 1,420,900 | 1,416,200 | 1,410,200 | 1,377,900 | 1,900 | 0.1% | 44,900 | 3.3% |
| Goods Producing Industries | | | | | | | | | |
| Mining | 500 | 600 | 600 | 600 | 500 | -100 | -16.7% | 0 | 0.0% |
| Construction | 62,700 | 62,300 | 61,400 | 61,600 | 59,500 | 400 | 0.6% | 3,200 | 5.4% |
| Manufacturing | 159,300 | 158,300 | 158,100 | 157,400 | 152,800 | 1,000 | 0.6% | 6,500 | 4.3% |
| Durable Goods | 123,500 | 123,200 | 123,000 | 122,500 | 119,800 | 300 | 0.2% | 3,700 | 3.1% |
| Nondurable Goods | 35,800 | 35,100 | 35,100 | 34,900 | 33,000 | 700 | 2.0% | 2,800 | 8.5% |
| Service Providing Industries | | | | | | | | | |
| Trade, Transportation & Utilities | 295,100 | 296,300 | 296,900 | 292,900 | 289,500 | -1,200 | -0.4% | 5,600 | 1.9% |
| Wholesale | 59,100 | 59,000 | 59,500 | 58,300 | 56,900 | 100 | 0.2% | 2,200 | 3.9% |
| Retail | 167,300 | 168,600 | 168,600 | 166,400 | 168,300 | -1,300 | -0.8% | -1,000 | -0.6% |
| Transp, Warehousing & Utilities | 68,700 | 68,700 | 68,800 | 68,200 | 64,300 | 0 | 0.0% | 4,400 | 6.8% |
| Information | 29,800 | 30,800 | 30,700 | 30,300 | 29,400 | -1,000 | -3.2% | 400 | 1.4% |
| Financial Activities | 118,500 | 117,900 | 118,300 | 117,600 | 118,200 | 600 | 0.5% | 300 | 0.3% |
| Finance & Insurance | 99,000 | 98,600 | 99,000 | 98,500 | 99,700 | 400 | 0.4% | -700 | -0.7% |
| Real Estate, Rental & Leasing | 19,500 | 19,300 | 19,300 | 19,100 | 18,500 | 200 | 1.0% | 1,000 | 5.4% |
| Professional & Business Services | 215,000 | 215,800 | 212,100 | 213,700 | 211,800 | -800 | -0.4% | 3,200 | 1.5% |
| Prof, Scientific & Tech Services | 95,600 | 96,300 | 97,100 | 96,800 | 94,500 | -700 | -0.7% | 1,100 | 1.2% |
| Management of Companies | 30,300 | 30,400 | 30,300 | 30,100 | 30,400 | -100 | -0.3% | -100 | -0.3% |
| Admn & Support & Waste Mgt Serv | 89,100 | 89,100 | 84,700 | 86,800 | 86,900 | 0 | 0.0% | 2,200 | 2.5% |
| Educational & Health Services | 334,000 | 334,400 | 334,000 | 334,300 | 332,000 | -400 | -0.1% | 2,000 | 0.6% |
| Educational Services | 65,900 | 67,100 | 66,300 | 66,700 | 63,900 | -1,200 | -1.8% | 2,000 | 3.1% |
| Health Care & Social Assistance | 268,100 | 267,300 | 267,700 | 267,600 | 268,100 | 800 | 0.3% | 0 | 0.0% |
| Leisure and Hospitality | 147,500 | 144,500 | 144,100 | 141,900 | 126,900 | 3,000 | 2.1% | 20,600 | 16.2% |
| Arts, Entertainment & Recreation | 27,000 | 25,900 | 25,200 | 23,600 | 21,600 | 1,100 | 4.2% | 5,400 | 25.0% |
| Accommodation & Food Services | 120,500 | 118,600 | 118,900 | 118,300 | 105,300 | 1,900 | 1.6% | 15,200 | 14.4% |
| Other Services | 60,400 | 60,000 | 60,000 | 59,900 | 57,300 | 400 | 0.7% | 3,100 | 5.4% |
| Government** | 224,300 | 224,600 | 225,600 | 226,200 | 221,900 | -300 | -0.1% | 2,400 | 1.1% |
| UNITED STATES | 151,314,000 | 150,886,000 | 150,458,000 | 149,744,000 | 144,694,000 | 428,000 | 0.3% | 6,620,000 | 4.6% |

LABOR MARKET AREAS (LMA)

Labor Market Area employment estimates are made independently of Statewide estimates.

| | April 2022 P | March 2022 R | February 2022 | January 2022 | April 2021 | Over Month Change | Over Month Rate | Over Year Change | Over Year Rate |
|---|-----------------|-----------------|------------------|-----------------|---------------|----------------------|--------------------|---------------------|-------------------|
| <i>Seasonally Adjusted data</i> | | | | | | | | | |
| Bridgeport-Stamford-Norwalk | 392,600 | 394,700 | 395,500 | 391,500 | 382,100 | -2,100 | -0.5% | 10,500 | 2.7% |
| Danbury | 75,200 | 74,900 | 74,800 | 74,700 | 73,300 | 300 | 0.4% | 1,900 | 2.6% |
| Hartford | 569,800 | 567,800 | 565,400 | 560,400 | 555,500 | 2,000 | 0.4% | 14,300 | 2.6% |
| New Haven | 294,300 | 294,500 | 293,800 | 292,500 | 284,200 | -200 | -0.1% | 10,100 | 3.6% |
| Norwich-New London-Westerly, RI | 120,100 | 119,200 | 118,800 | 118,300 | 116,700 | 900 | 0.8% | 3,400 | 2.9% |
| Waterbury | 65,800 | 65,600 | 65,700 | 65,900 | 64,100 | 200 | 0.3% | 1,700 | 2.7% |
| <i>Not Seasonally Adjusted data (Non-Classified Areas, State estimated - not BLS)</i> | | | | | | | | | |
| Enfield | 40,900 | 41,000 | 41,100 | 41,300 | 40,600 | -100 | -0.2% | 300 | 0.7% |
| Torrington-Northwest | 31,000 | 31,200 | 31,100 | 31,200 | 30,500 | -200 | -0.6% | 500 | 1.6% |
| Danielson-Northeast | 26,200 | 26,100 | 26,000 | 26,000 | 26,100 | 100 | 0.4% | 100 | 0.4% |

* Less than 0.05% ** Includes Native American tribal government employment

P = Preliminary

R = Revised

Starting with March, 2011, our monthly statewide and major LMA nonfarm job estimates have been taken over by the US Department of Labor Bureau of Labor Statistics. This is the final phase of transition in this program, which began in 2008. As a result of changes in the estimation procedures, you are likely to see more variability in month-to-month estimates of job counts. Caution should be used in interpreting any single month's estimate. The data are best interpreted to identify trends and cycles over several months and quarters. If you have any questions about these changes, please email us at: dol.lmi@ct.gov. Danbury and Waterbury LMA's are now back to being seasonally adjusted.

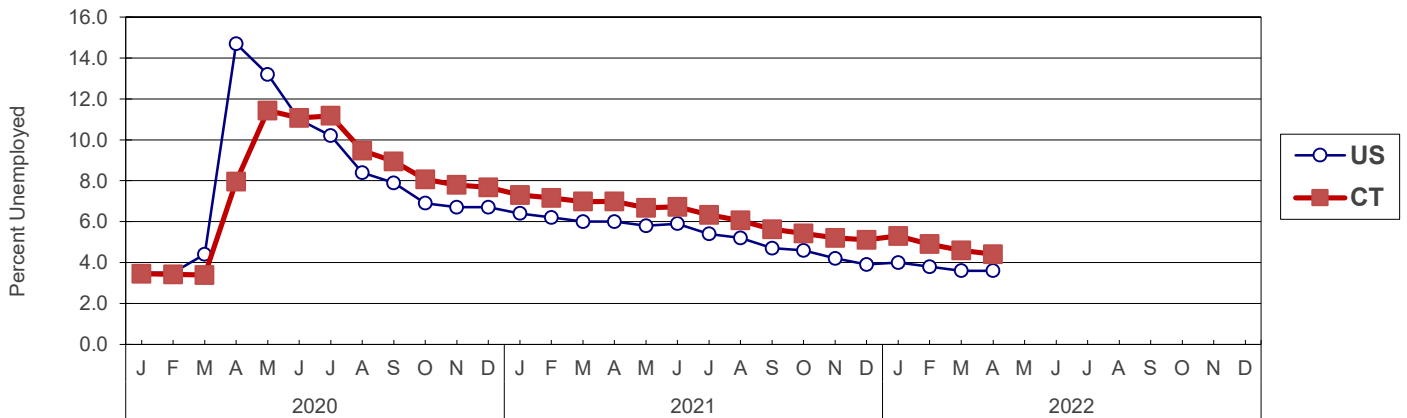
UNEMPLOYMENT

Persons Unemployed - by Place of Residence

CONNECTICUT AND THE UNITED STATES - Seasonally Adjusted

| | Apr 2022 P | | Apr 2021 R | | Change | | Mar 2022 R | |
|----------------------|-------------|------|-------------|------|------------|--------|-------------|------|
| | Number | Rate | Number | Rate | Number | Points | Number | Rate |
| CONNECTICUT | | | | | | | | |
| Unemployed | 83,900 | 4.4 | 129,500 | 7.0 | -45,600 | -2.6 | 86,100 | 4.6 |
| Labor Force | 1,888,100 | | 1,853,800 | | 34,300 | | 1,879,300 | |
| UNITED STATES | | | | | | | | |
| Unemployed | 5,941,000 | 3.6 | 9,719,000 | 6.0 | -3,778,000 | -2.4 | 5,952,000 | 3.6 |
| Labor Force | 164,046,000 | | 160,978,000 | | 3,068,000 | | 164,409,000 | |

U.S. AND CONNECTICUT UNEMPLOYMENT RATES - Seasonally Adjusted 2020 - 2022



LABOR MARKET AREAS - Not Seasonally Adjusted

| | Apr 2022 P | | Apr 2021 R | | Change | | Mar 2022 R | |
|------------------------|------------------|------------|------------------|------------|-------------------|-------------|------------------|------------|
| | Number | Rate | Number | Rate | Number | Points | Number | Rate |
| Bridgeport-Stamford | 17,200 | 3.8 | 30,100 | 6.8 | -12,900 | -3.0 | 20,000 | 4.3 |
| Danbury | 3,300 | 3.2 | 6,000 | 5.9 | -2,700 | -2.7 | 4,000 | 3.8 |
| Danielson-Northeast* | 1,500 | 3.6 | 2,500 | 6.1 | -1,000 | -2.5 | 1,900 | 4.3 |
| Worcester NECTA | 1,500 | 3.6 | 2,400 | 6.2 | -900 | -2.6 | 1,800 | 4.3 |
| Hampton | 100 | 3.0 | 100 | 5.1 | 0 | -2.1 | 100 | 3.5 |
| Enfield | 1,700 | 3.4 | 2,900 | 6.1 | -1,200 | -2.7 | 2,000 | 4.0 |
| Hartford | 23,200 | 3.8 | 41,800 | 6.9 | -18,600 | -3.1 | 26,200 | 4.2 |
| New Haven | 11,400 | 3.5 | 20,800 | 6.5 | -9,400 | -3.0 | 13,100 | 3.9 |
| Norwich-New London | 5,300 | 4.0 | 9,900 | 7.5 | -4,600 | -3.5 | 6,300 | 4.7 |
| Torrington-Northwest** | 1,600 | 3.4 | 2,800 | 6.3 | -1,200 | -2.9 | 2,000 | 4.3 |
| Torrington NECTA | 1,000 | 4.0 | 1,800 | 7.4 | -800 | -3.4 | 1,300 | 5.0 |
| Litchfield | 500 | 2.6 | 1,000 | 4.9 | -500 | -2.3 | 700 | 3.4 |
| Waterbury | 5,100 | 4.7 | 9,000 | 8.4 | -3,900 | -3.7 | 6,000 | 5.4 |
| CONNECTICUT | 69,900 | 3.8 | 125,100 | 6.8 | -55,200 | -3.0 | 81,000 | 4.3 |
| UNITED STATES | 5,458,000 | 3.3 | 9,220,000 | 5.7 | -3,762,000 | -2.4 | 6,168,000 | 3.8 |

P = Preliminary

R = Revised

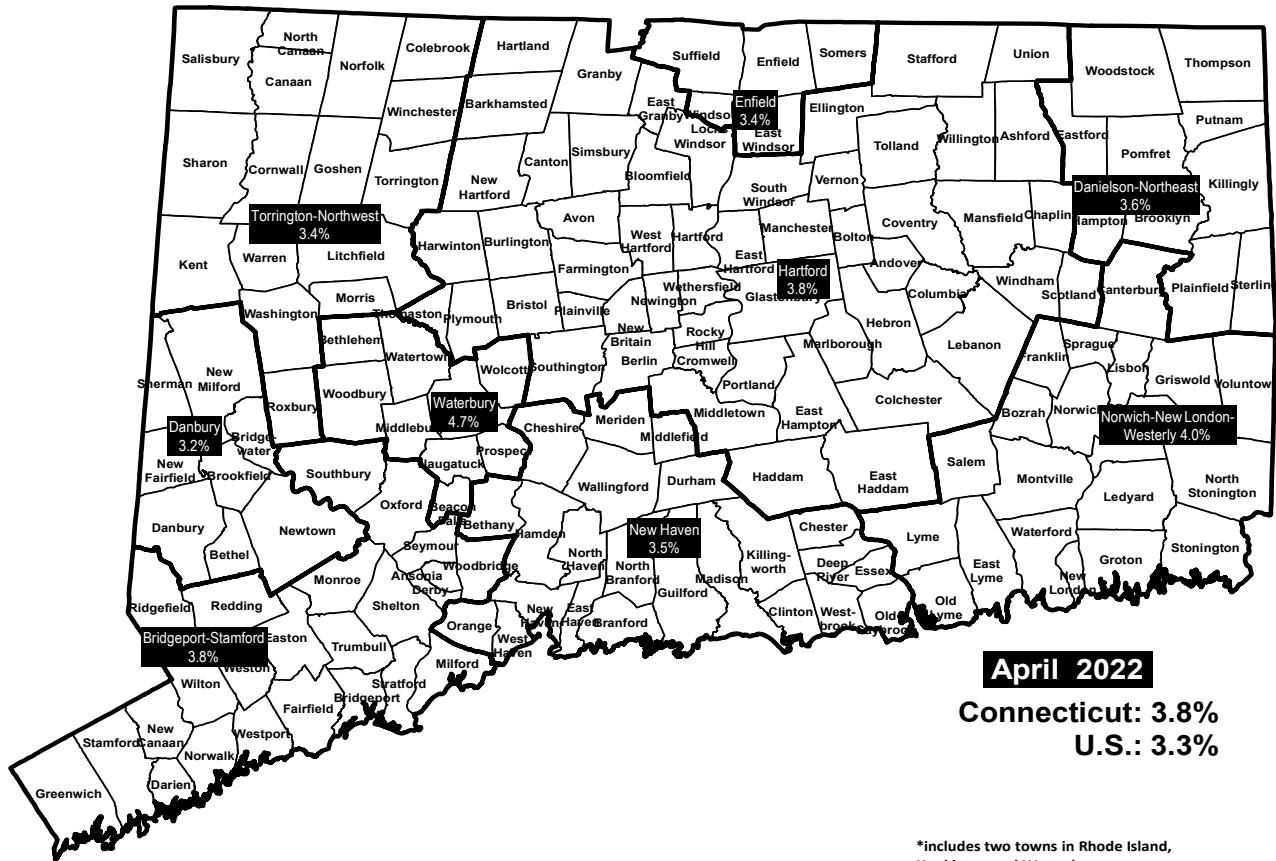
Labor force data included in this publication are developed in cooperation with the U.S. Department of Labor, Bureau of Labor Statistics.

* Worcester NECTA, CT part and Hampton LMA are combined ** Torrington Micropolitan NECTA and Litchfield LMA are combined

UNEMPLOYMENT RATES

Not Seasonally Adjusted

LABOR MARKET AREAS



*includes two towns in Rhode Island, Hopkinton and Westerly.

HOURS AND EARNINGS

CONNECTICUT Statewide - Not Seasonally Adjusted

| | Average Weekly Earnings | | | | Average Weekly Hours | | | | Average Hourly Earnings | | | |
|--|-------------------------|------------|-----------------|-------------|----------------------|-----------|-----------------|-------------|-------------------------|-----------|-----------------|-------------|
| | Apr. 2022 P | Apr. 2021 | Change over Yr. | Mar. 2022 R | Apr. 2022 P | Apr. 2021 | Change over Yr. | Mar. 2022 R | Apr. 2022 P | Apr. 2021 | Change over Yr. | Mar. 2022 R |
| Private Industry All Employees | \$1,160.69 | \$1,149.17 | \$11.52 | \$1,157.69 | 33.8 | 34.1 | -0.3 | 33.9 | \$34.34 | \$33.70 | \$0.64 | \$34.15 |
| Manufacturing* Production Workers | \$1,093.31 | \$1,111.61 | -\$18.30 | \$1,121.58 | 39.8 | 39.8 | 0.0 | 40.2 | \$27.47 | \$27.93 | -\$0.46 | \$27.90 |

* Production worker data have been impacted by the loss of a large, high-paying manufacturer from the monthly sample.

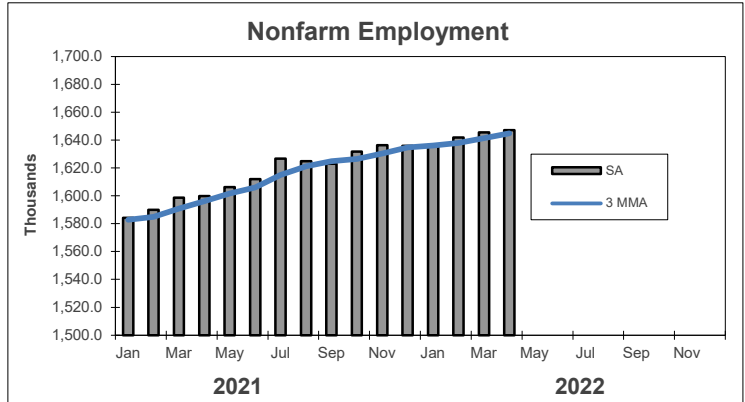
P = Preliminary R = Revised

Hours and earnings are also developed for the state's major industry sectors and Labor Market Areas. They can be found on our website at: www1.ctdol.state.ct.us/lmi

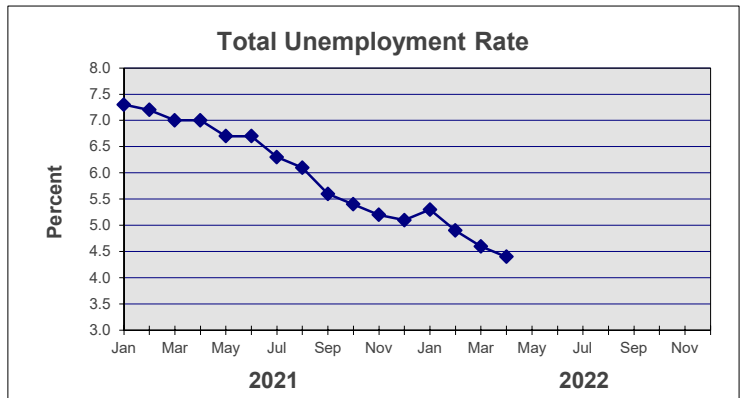
TRENDS

Seasonally Adjusted

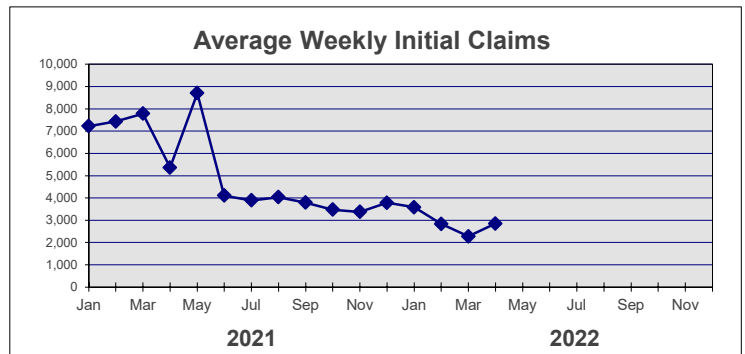
| | Nonfarm Employment (000s) | Total Unemployment Rate |
|-------------|------------------------------|----------------------------|
| 2021 | | |
| Jan | 1,584.1 | 7.3 |
| Feb | 1,590.0 | 7.2 |
| Mar | 1,598.7 | 7.0 |
| Apr | 1,599.8 | 7.0 |
| May | 1,606.3 | 6.7 |
| Jun | 1,612.0 | 6.7 |
| Jul | 1,626.6 | 6.3 |
| Aug | 1,624.7 | 6.1 |
| Sep | 1,622.9 | 5.6 |
| Oct | 1,631.6 | 5.4 |
| Nov | 1,636.3 | 5.2 |
| Dec | 1,635.8 | 5.1 |



| | | |
|-------------|-----------|-------|
| 2022 | | |
| Jan | 1,636.4 | 5.3 |
| Feb | 1,641.8 | 4.9 |
| Mar | 1,645.5 R | 4.6 R |
| Apr | 1,647.1 P | 4.4 P |
| May | | |
| Jun | | |
| Jul | | |
| Aug | | |
| Sep | | |
| Oct | | |
| Nov | | |
| Dec | | |



| | Avg Weekly Initial Claims | All Employee Weekly Hours* |
|-------------|------------------------------|-------------------------------|
| 2021 | | |
| Jan | 7,226 | 34.2 |
| Feb | 7,431 | 33.9 |
| Mar | 7,780 | 34.2 |
| Apr | 5,366 | 34.1 |
| May | 8,702 | 34.5 |
| Jun | 4,109 | 33.9 |
| Jul | 3,892 | 34.1 |
| Aug | 4,031 | 34.3 |
| Sep | 3,789 | 34.1 |
| Oct | 3,472 | 33.9 |
| Nov | 3,376 | 34.1 |
| Dec | 3,780 | 34.4 |



| | | |
|-------------|-------|--------|
| 2022 | | |
| Jan | 3,585 | 34.1 |
| Feb | 2,837 | 34.0 |
| Mar | 2,275 | 33.9 R |
| Apr | 2,848 | 33.8 P |
| May | | |
| Jun | | |
| Jul | | |
| Aug | | |
| Sep | | |
| Oct | | |
| Nov | | |
| Dec | | |



* Not seasonally adjusted

P = Preliminary

R = Revised

** Labor-management dispute